



September 2025

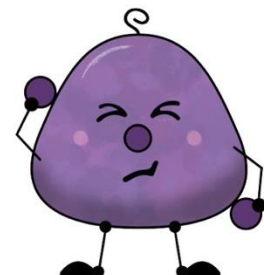


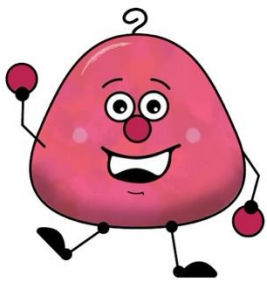
SUPERSTAR
OF THE
WEEK

Su	Mon	Tue	Wed	Thurs	Fri	Sa
	1	2	3	4	5	6
7	8	9	10	11	12	13
14	15 RYAN	16	17	18	19	20
21	22 MARCUS	23	24	25	26	27
28	29 ELIZABETH	30				

Notes:

Type in this text box.





October 2025



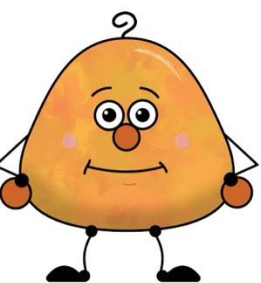
SUPERSTAR
OF THE
WEEK

Su	Mon	Tue	Wed	Thurs	Fri	Sa
			1	2	3	4
5	6 YURI	7	8	9	10	11
12	13 FALL BREAK	14	15	16	17	18
19	20 OWEN	21	22	23	24	25
26	27 MILA	28	29	30	31	

Notes:

Type in this text box.





November 2025

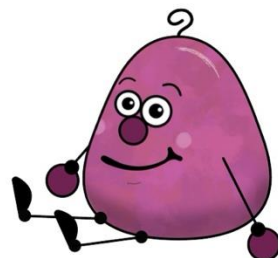


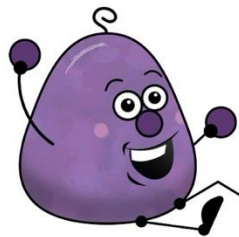
SUPERSTAR
OF THE
WEEK

Su	Mon	Tue	Wed	Thurs	Fri	Sa
						1
2	3 GWEN	4	5	6	7	8
9	10	11 VET'S DAY NO SCHOOL	12	13	14	15
16	17 EMELIA	18	19	20	21	22
23	24 THANKSGIVING BREAK	25	26	27	28	29
30						

Notes:

Type in this text box.





December 2025

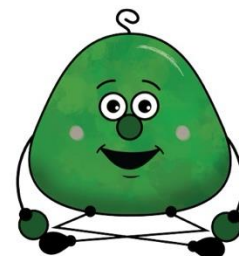


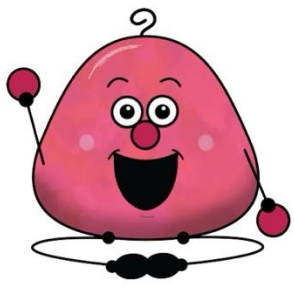
SUPERSTAR
OF THE
WEEK

Su	Mon	Tue	Wed	Thurs	Fri	Sa
	1 MCKINLEY	2	3	4	5	6
7	8 DALLIS	9	10	11	12	13
14	15	16	17	18	19 WINTER PARTY	20
21	22 WINTER BREAK	23	24	25	26	27
28	29 WINTER BREAK	30	31			

Notes:

Type in this text box.





January 2026

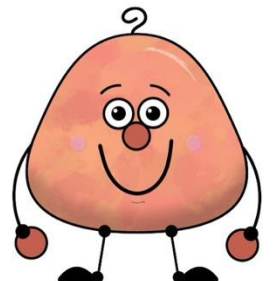


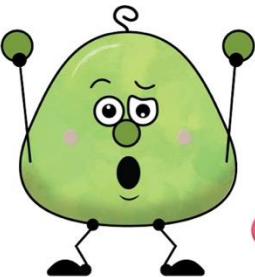
SUPERSTAR
OF THE
WEEK

Su	Mon	Tue	Wed	Thurs	Fri	Sa
				1	2	3
4	5	6 RETURN FROM WINTER BREAK	7	8	9	10
11	12 ASHER	13	14	15	16	17
18	19 NO SCHOOL – MLK DAY	20	21	22	23	24
25	26 ARIELA	27	28	29	30	31

Notes:

Type in this text box.





February 2026



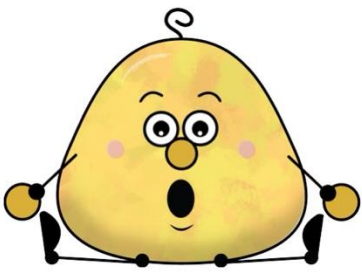
SUPERSTAR
OF THE
WEEK

Su	Mon	Tue	Wed	Thurs	Fri	Sa
1	2 J.J.	3	4	5	6	7
8	9 RYLEA	10	11	12	13	14
15	16 NO SCHOOL PRESIDENT'S DAY	17	18	19	20	21
22	23 YASMINE	24	25	26	27	28

Notes:

Type in this text box.





March 2026



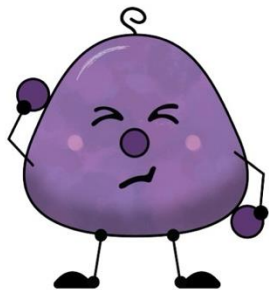
SUPERSTAR
OF THE
WEEK

Su	Mon	Tue	Wed	Thurs	Fri	Sa
1	2 KINGSTON	3	4	5	6	7
8	9 LEO	10	11	12	13	14
15	16 SPRING BREAK	17	18	19	20	21
22	23 ELISE	24	25	26	27	28
29	30	31				

Notes:

Type in this text box.





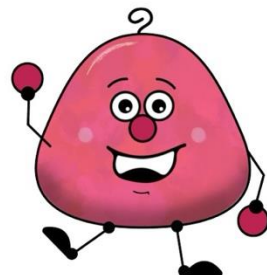
April 2026

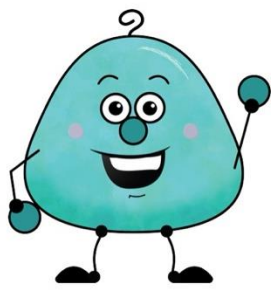
SUPERSTAR
OF THE
WEEK

Su	Mon	Tue	Wed	Thurs	Fri	Sa
			1	2	3 NO SCHOOL GOOD FRIDAY	4
5	6 NO SCHOOL	7	8	9	10	11
12	13 ALI	14	15	16	17	18
19	20 ALICE	21	22	23	24	25
26	27 NATHAN	28	29	30		

Notes:

Type in this text box.





May 2026

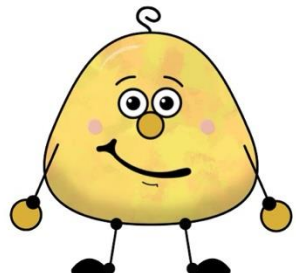


SUPERSTAR
OF THE
WEEK

Su	Mon	Tue	Wed	Thurs	Fri	Sa
					1	2
3	4 NOAH	5	6	7	8	9
10	11	12	13	14	15	16
17	18	19	20	21	22	23
24	25	26	27	28	29	30
31						

Notes:

Type in this text box.





June 2026



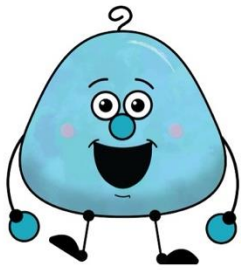
Type Class
Name

Su	Mon	Tue	Wed	Thurs	Fri	Sa
	1	2	3	4	5	6
7	8	9	10	11	12	13
14	15	16	17	18	19	20
21	22	23	24	25	26	27
28	29	30				

Notes:

Type in this text box.

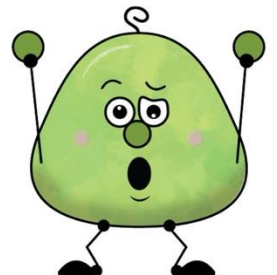




Type Class
Name

Su	Mon	Tue	Wed	Thurs	Fri	Sa

Notes:
Type in this text box.



Back-to-School Assessments

MATH ASSESSMENTS

End of K → Beginning of 1st

Counting and Cardinality

Which is more?

5 2

ADDITION FLUENCY ASSESSMENT
End of Kindergarten | Beginning of 1st Grade

Score:

4 + 2	1 + 5	6 + 3
1 + 8	5 + 4	2 + 2
3 + 6	4	
5 + 0	1	

FORM

PDF

MB Creations

Self-Grading • Two Versions

MATH ASSESSMENTS

End of 1st → Beginning of 2nd

Operations and Algebraic Thinking

What is missing?

$16 - ? = 8$

ADDITION FLUENCY ASSESSMENT
End of 1st Grade | Beginning of 2nd Grade

Score:

9 + 7	4 + 6	12 + 5
3 + 11	7 + 6	2 + 15
4 + 13	1	
7 + 7	10	

FORM

PDF

MB Creations

Self-Grading • Two Versions

MATH ASSESSMENTS

End of 2nd → Beginning of 3rd

Operations and Algebraic Thinking

Which number is odd?

4 8 10
15 22 36

ADDITION FLUENCY ASSESSMENT
End of 2nd Grade | Beginning of 3rd Grade

Score:

8 + 9	2 + 7	11 + 6
6 + 6	3 + 14	4 + 3
1 + 16	4 + 12	11 + 2
7 + 9	6 +	
12 + 3	15 +	
3 + 9	7 +	

FORM

PDF

MB Creations

Self-Grading • Two Versions

MATH ASSESSMENTS

End of 3rd → Beginning of 4th

Operations and Algebraic Thinking

What number is missing?

$6 \times = 36$

MULTIPLICATION FLUENCY ASSESSMENT
End of 3rd Grade | Beginning of 4th Grade

Score:

8 × 5	3 × 6	10 × 3
4 × 8	5 × 7	7 × 3
5 × 3	3 × 8	5 × 5
4 × 7	8 ×	
9 × 4	8 ×	
4 × 4	6 × 6	

FORM

PDF

MB Creations

Self-Grading • Two Versions

MATH ASSESSMENTS

End of 4th → Beginning of 5th

Operations and Algebraic Thinking

Which of the following numbers is prime?

9 10 16
23 25 27

MULTIPLICATION FLUENCY ASSESSMENT
End of 4th Grade | Beginning of 5th Grade

Score:

12 × 2	5 × 9	6 × 7
11 × 3	4 × 6	7 × 12
3 × 8	10 × 12	6 × 4
8 × 6	9 ×	
2 × 8	6 ×	
10 × 11	11 ×	

FORM

PDF

MB Creations

Self-Grading • Two Versions

MATH ASSESSMENTS

End of 5th → Beginning of 6th

Operations and Algebraic Thinking

Evaluate the expression.

$18 \div 2 \times 3^2 - (6 \times 4)$

MULTIPLICATION FLUENCY ASSESSMENT
End of 5th Grade | Beginning of 6th Grade

Score:

15 × 3	7 × 12	5 × 14
10 × 7	14 × 2	12 × 5
4 × 11	6 × 15	11 × 9
7 × 6	15 ×	
6 × 9	4 ×	
7 × 7	8 ×	

FORM

PDF

MB Creations

Self-Grading • Two Versions

Teacher Favorites

yearlong

BATTLE BRACKETS

- Print PDF
- Present Slides
- Edit Template

NATURAL WONDERS

Yellowstone Valley

Catalpa Island

Amazon Rainforest

Niagara Falls

Mount Everest

Great Barrier Reef

Grand Canyon

MODES OF TRANSPORTATION


Readers and all other students will be competing in the "Modes of Transportation" tournament. Write the scores in the final round and determine your winner and your runner-up in the end. You will also determine the winner and your runner-up in the end.

Initial	Final	Score
Basketball		
Baseball		
Soccer		
Hockey		
Gymnastics		

MB Creations

READING LOGS

Use with any year!



READING SUMMARY

Title: _____ Author: _____


JANUARY READING LOG

Name: Caitlin


	Monday	Tuesday	Wednesday	Thursday	Friday	Saturday
1	10	30	20	10		10
2	20	20	11	20	10	
3	20	20	18	20	20	
4						
5						
6						
7						
8						
9						
10						
11						
12						
13						
14						
15						
16						
17						
18						
19						
20						
21						
22						
23						
24						
25						
26						
27						
28						
29						
30						
31						

If the Month: Set a Goal
to read for 300 minutes this month.


Month: Check In



	Week 1	Week 2	Week 3	Week 4	Week 5
100					
90					
80					
70					
60					
50					
40					
30					
20					
10					
0					



Customize



BUNDLE

By: Jessica Jones

VISUAL SCHEDULE

Behavior Check In

FIX-IT TICKETS

• Correct Work • Improve Behaviors

FIX IT TICKET

Please give this another try and turn it in again.

- ☐ Incomplete work
- ☐ Incorrect answers
- ☒ Missing your name
- ☐ Neatness - hard to read
- ☐ Spelling Mistakes

PERSONAL GOAL

This week I struggled to...

- Follow directions
- Participate in lessons
- Focus on my learning task
- Follow the voice level in the classroom
- Be kind and respectful to myself and others
- Get started on my learning task right away
- Keep my hands to myself
- Make safe choices on the playground

FIX IT TICKET

Treating others with respect protects our right to feel safe and ready to learn. Please write an apology.

Date: _____

Name: _____

Next week I will prove _____

Edit on Google Slides

MB Creations

ANCHOR CHARTS

Basic Multiplication Strategies

Color
B&W

SKIP COUNTING

What Is It?

- counting forward by a specific number to quickly find the product of two factors

In Real Life...

- count money (skipping by \$5)
- tell time (3:00, 3:15, 3:30)
- measure ingredients (2 cups, 4 cups)

- Skip counting finds multiples of numbers.

Skip Counting 2s

```

    graph LR
      2[2] -- 2 --> 4[4]
      4 -- 2 --> 6[6]
      6 -- 2 --> 8[8]
      8 -- 2 --> 10[10]
      10 -- 2 --> 12[12]
  
```

(2, 4, 6, 8, 10, 12) is the same as

$$2 \times 6 = (2 + 2 + 2 + 2 + 2 + 2) = 12$$

COMMUTATIVE PRO

What Is It?

- understanding that changing the order of factors does not change the product

Flip the factors
and the product
stays the same!

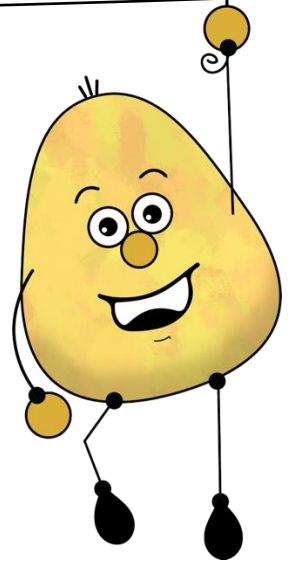
$$2 \times 3 = 6$$

$$3 \times 2 = 6$$



Thank You

TPT Store: MB Creations



Product Terms of Use: This download is for single use only. It may be printed for a single classroom and cannot be put on the Internet or sold in any form. Please refrain from copying, sharing, or taking credit for this product. Direct others to my store to purchase or buy multiple licenses.

Credits



Follow Me

